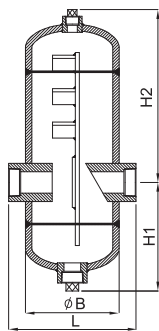


# Type YSS-100 Steam Separator

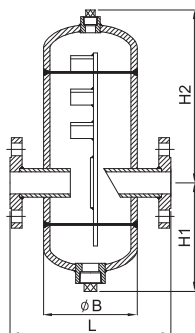
This product ensures that there is no pressure loss within the pipeline, and is designed in a way that allows an effective water separation function even when there are flow velocity changes. It can thus be used for steam pipelines as well as compressed air pipelines.



## ■ Dimensional drawing



Screwed type



Flanged type

## ■ Features

- Protects process facilities & extends life span by preventing damage caused by Water Hammer in steam system.
- Shield board designed condensate which is separated steam's flow efficiently gathered at discharge point.
- Almost no pressure loss within pipeline, efficiently separates condensate even in extensive flow velocity changes.

## ■ Specifications

Applicable fluid	Steam	
Applicable pressure	Maximum 20 kgf/cm <sup>2</sup> g	
Fluid temperature	214° C below	
End connection	KS PT SCREW	KS 20K RF FLANGE
Materials	SPPS	
Hydraulic test pressure	35 kgf/cm <sup>2</sup> g	

► In terms of the end connection, the PT, NPT, KS, and ANSI standards can be applied.

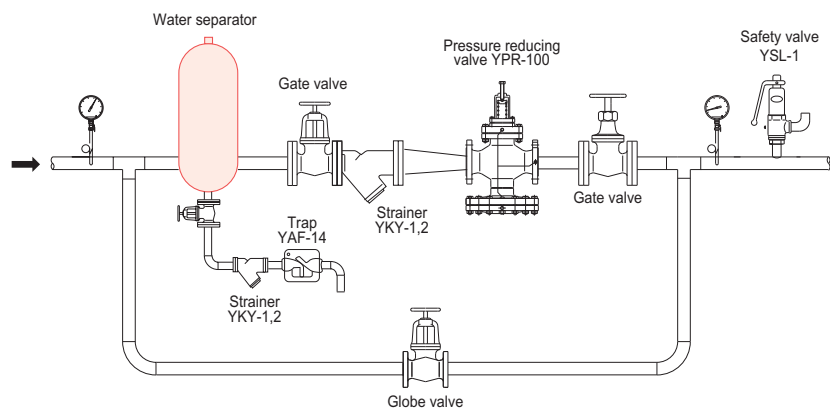
## ■ Dimensions

Size	L	H1	H2	ØB	Weight(kg)
15(1/2")	160(120)	125	175	76	4.1
20(3/4")	200(136)	124	200	89	5.9
25(1")	220(162)	131	223	114	8.9
32(1 1/4")	240(190)	162	258	139	14.1
40(1 1/2")	280(220)	175	320	165	18.7
50(2")	290(220)	209	352	165	21.8
65(2 1/2")	350	246	409	216	37
80(3")	410	305	437	267	60
100(4")	468	367	463	318	85
125(5")	556	350	532	355	136
150(6")	656	375	575	406	195
200(8")	898	421	667	508	313

► Made-to-orders are available for water separators with a size of 250 or larger.

► Dimensions in parentheses are for the screwed type.

## ■ Application Diagram (Example)



## ■ Installation and application in a steam pipeline

- The diameter of the water separator should be the same as the pipeline diameter. The separator should be installed in a horizontal pipeline.
- The condensate gathered at the discharge point of the separator should be immediately discharged. This is why there is a need to install a float steam trap on the lower part.