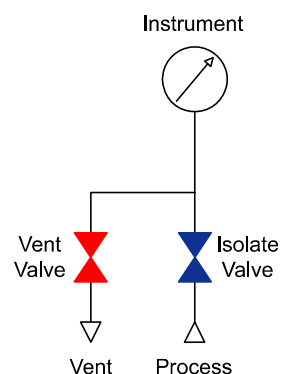


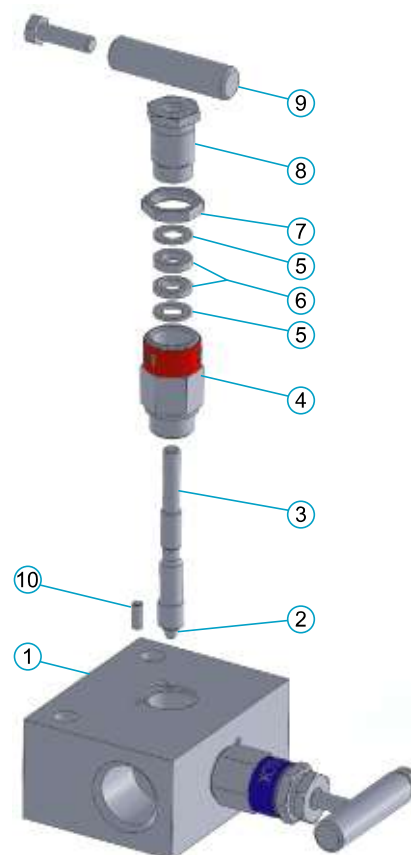
M Series 2-Valve Manifolds

The 2-Valve manifold used mainly in static pressure gauge and instrument applications such as pressure transmitters has process isolation valve and vent valve for pressure removal.

- Consists of one isolation valve and one vent valve.
- Connections - Female pipe (NPT) threads, Flange (IEC).
- Direct instrument mount and remote mount.
- Mounting holes as standard.



Component		Material Grade / ASTM Specification
1	Body	316 SS/A479 or A182
2	Disc	630 SS/A564
3	Stem	316 SS/A479
4	Bonnet	316 SS/A479
5	Packing Washer	Reinforced PTFE
6	Stem Packing	PTFE
7	Lock Nut	316 SS/A479
8	Packing Bolt	316 SS/A479
9	Handle	316 Stainless Steel
10	Stop Pin	316 Stainless Steel



M Series 2-Valve Manifolds

Remote Mount Manifolds (Female to Female)

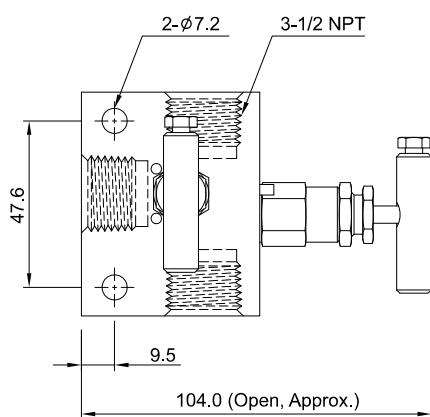
Pressure Manifolds

VM2VTV8N

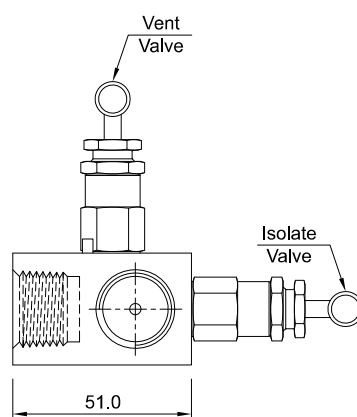
0.8 Kg (1.8 lb)

T : PTFE Packing

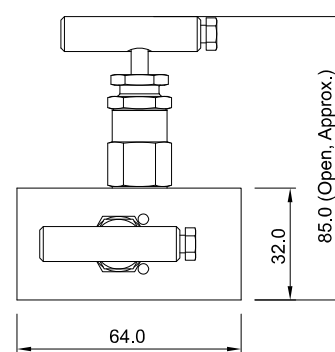
G : Graphite Packing



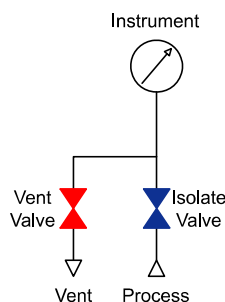
Top



Front



Side



Remote Mount Manifolds / Vertical Vent (Female to Female)

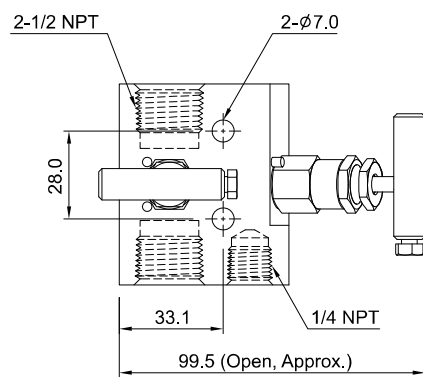
Pressure Manifolds

VM2VTV8N

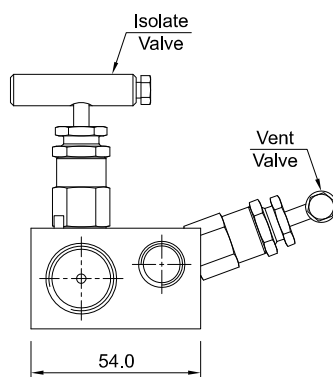
0.9kg (2.0lb)

T : PTFE Packing

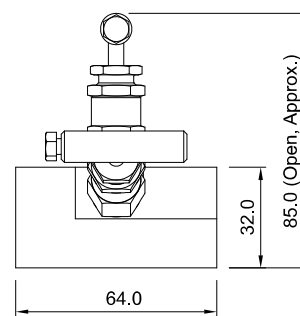
G : Graphite Packing



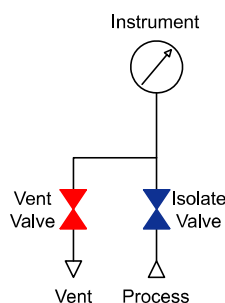
Top



Front



Side



All dimensions are in millimeters(inchs) reference only, subject to change.