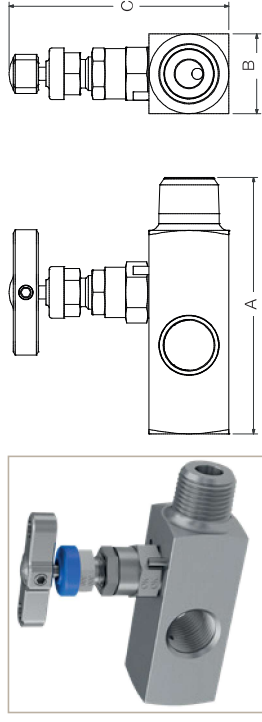


Gauge Valves - HGV Series

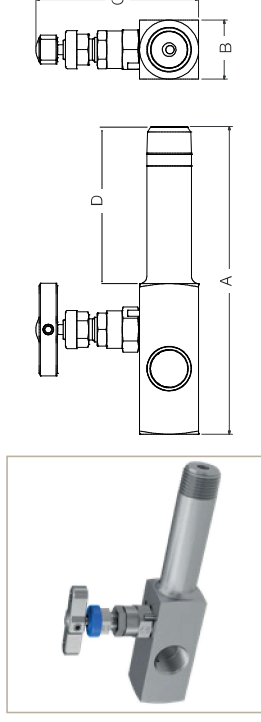
Multi-port gauge valves

Parker's multi-port gauge valves are purpose designed valves for operation up to 6,000 psig (414 barg) and 10,000 psig (689 barg). Featuring as standard PTFE gland packing and self-centering non-rotational tip for bubble-tight seat shut-off, these valves give the user the assurance of safety and performance.

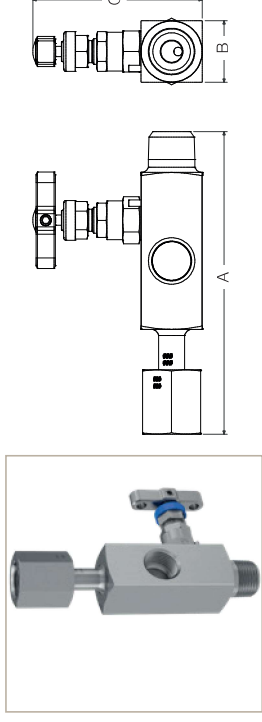
HGV* - Male x Female (3 outlets) threaded - NPT



HGVX* - Male Extended x Female (3 outlets) threaded - NPT



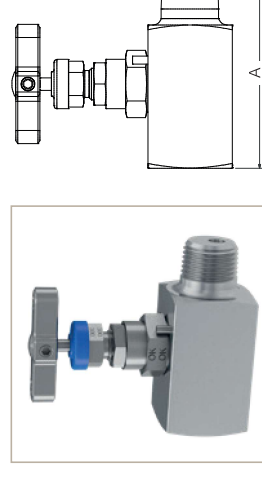
HGVWG* - Male x Female (2 outlets) threaded - NPT with integral swivel gauge adaptor



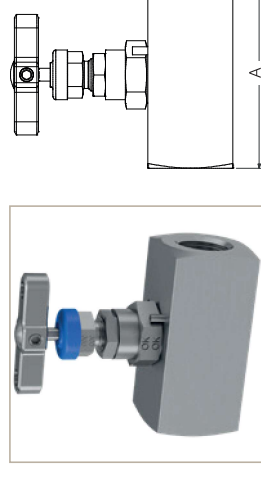
Rising Plug Valve

These unique, high quality, high performance low-torque rising plug soft-seated valves have been specifically designed to perform in applications containing high levels of contamination such as those frequently found in oil and gas processing facilities. With a straight through flow path, 100% repeatable bubble-tight shut-off performance standard with PEEK seat will perform up to 6,000 psig (689 barg) with low spindle operating torque.

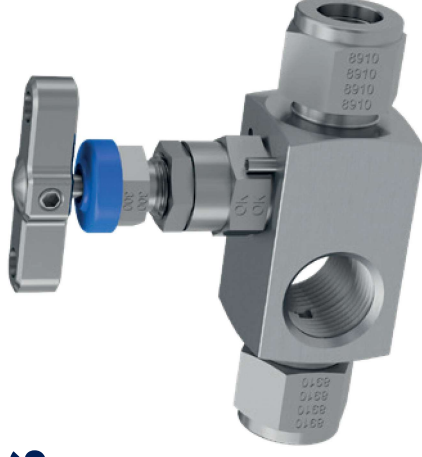
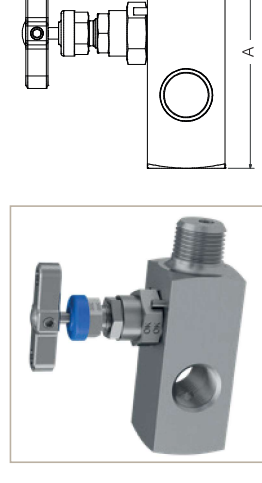
HRPV4* - Male x Female threaded - NPT



HRPV4* - Female x Female threaded - NPT



HRPV4G* - Male x Female (3 outlets) threaded - NPT



Example shown: Multi-port gauge valve with integral A-LOK® connections.

Inlet	Outlet	Dimension		
		A	B	C
		mm (inch)	mm (inch)	mm (inch)
Male	Female	72.5 (2.85)	28.6 (1.13)	79.4 (3.13)
1/4" NPT	1/4" NPT	92.0 (3.62)	28.6 (1.13)	79.4 (3.13)
1/2" NPT	1/2" NPT	97.2 (3.82)	28.6 (1.13)	79.4 (3.13)

*Optional outlet

Inlet	Outlet	Dimension			
		A	B	C	D
		mm (inch)	mm (inch)	mm (inch)	mm (inch)
Male	Female	148.0 (5.83)	28.6 (1.13)	79.4 (3.13)	75.0 (2.95)*
1/2" NPT	1/2" NPT	148.0 (5.83)	28.6 (1.13)	79.4 (3.13)	75.0 (2.95)*

- * Example part numbers:
- 1/2" NPT Male inlet - default extension: 75mm (2.95"), 1/2" NPT Fem. outlet = **HGVXS8M8F**
 - 1/2" NPT Male inlet - optional extension: 100mm (3.94"), 1/2" NPT Fem. outlet = **HGVXS12MD8F** (add **D** for 100mm extension)

Inlet	Outlet	Dimension		
		A	B	C
		mm (inch)	mm (inch)	mm (inch)
Male	Female	140.8 (5.54)	28.6 (1.13)	79.4 (3.13)
1/2" NPT	1/2" BSPP	140.8 (5.54)	28.6 (1.13)	79.4 (3.13)

- Swivel adaptor to the outlet is provided through a socket weld, generally conforming to ANSI B16.11.
- Weld connection is a "commercial weld", completed by a qualified welder. Any specific qualification, certification, documentation or additional NDT, will require to be engineered and quoted extra - please consult your local Parker support.
- Union nut dimensions generally conform to DIN 16284 as it applies to the union of pinhole & nut themselves.